

**As a global enterprise, HSG sticks to providing professional and convenient service support to customers at home and board**

- Professional Training**  
Multiple technical training service and free operation training for customers and dealers in time
- Efficient Support**  
Humanistic service model, online services and 7\*24 hotline to offer solutions and assistance
- Optimized Transport**  
Multi-channel transport solutions and professional transport solution team will provide various transport cases for to satisfy the demand of customers and save transports fees
- Sufficient Accessories**  
Highly efficient accessories delivery service, multiple network inventory jointly responds to accessories demand to shorten customer's waiting times and accelerate production
- Careful Services**  
Domestic door-to-door service and free proofing, global 100+dealers provide efficient and convenient services



Intelligent Manufacturing Changes Future



Website



Facebook



Youtube

Headquarters Add.: No. 4, Anye Road, Shunjiang Community Industrial Park, Beijiao Town, Shunde District, Foshan, Guangdong, China  
Website: [www.hsglaser.com](http://www.hsglaser.com)  
Email: [info@hsglaser.com](mailto:info@hsglaser.com)  
Tel: +86 757-66833906



Cutting | Bending | Welding | Automation



**TL**

Four-chuck Heavy-duty Tube Laser Cutting Machine

[www.hsglaser.com](http://www.hsglaser.com)

## Company Culture

### MISSION

Intelligent manufacturing changes future

### VALUES

Customer-focused and employee-based

### VISION

Become a respectable enterprise in the global metal forming equipment field

## Company Profile



**13**

Global Branches



**100+**

Countries Covered



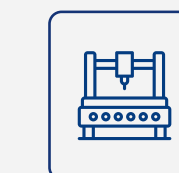
**4**

Manufacturing Bases



**30+**

Global Service Outlets



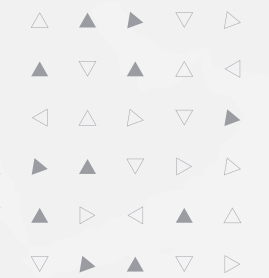
**8,000+**

Delivery Capability



**96,000m<sup>2</sup>**

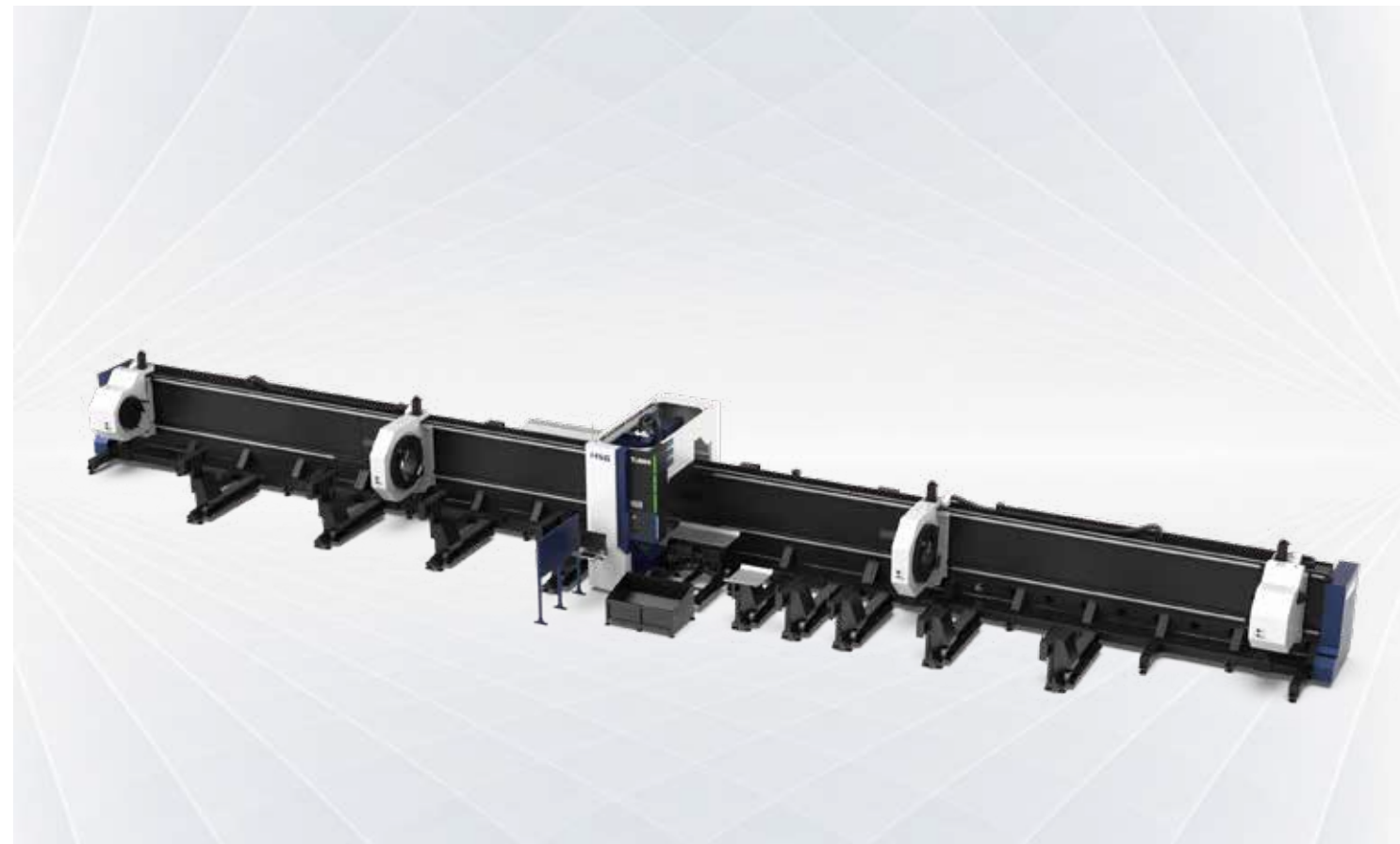
Production Base





# TL 6000-12000W

## Four-chuck Heavy-duty Tube Laser Cutting Machine



### Technical Parameters

Technical Parameter	TL660	TL730
Power	6000-12000W	6000-12000W
Rotating Speed of Chucks	30r/min	30r/min
No-load Speed	50m/min	45m/min
X/Y-axis Positioning Accuracy	±0.01mm/m	±0.01mm/m
X/Y-axis Repositioning Accuracy	±0.01mm	±0.15mm
*Tailing Length	0mm	0mm
Cutting Capacity	Round tubeΦ80 - Φ660mm Square tube□80-450mm Diagonal≤660mm and Side Length ≥80mm	Round tubeΦ120 - Φ715mm Square tube□120*120 - □500*500 120mm≤Side Length ≤600×400mm
Weight of Single Tube	3000kg	4000kg
Overall Dimensions(L*W*H) with Loading Racks	29000*5500*4000mm	38000*6500*5000mm

\*Only when the nesting material is reasonable can it be achieved  
 \* Machine appearance, technical parameters, function description, data comparison shown in this page are from HSG in-house laboratory.  
 All testing results and experimental data shall be subject to real machine.

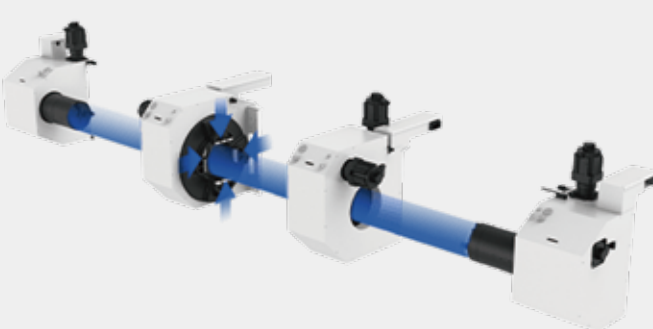
### X9800 Bus-based Tube Cutting Control System

- Simple Interface  
Clear interface is convenient for users operating and shows cutting data in real time to save time and costs.
- Functional Integration Control  
A number of core functions are showed centrally on the interface to reduce operating steps and users can easily learn to operate.



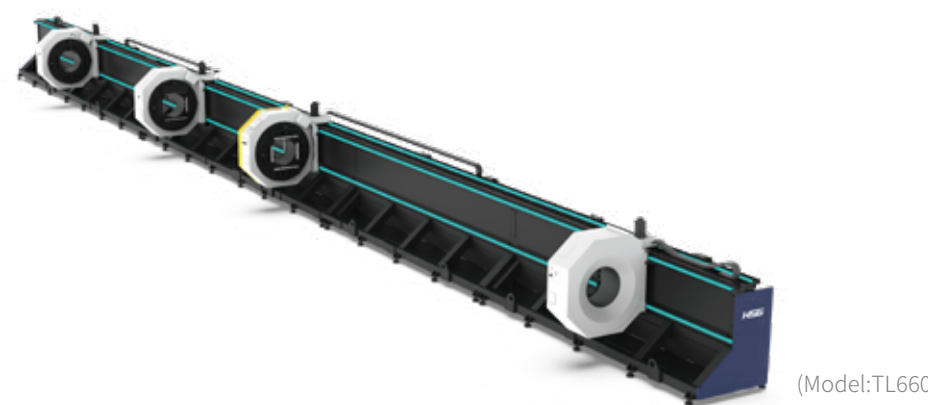
### Four Chucks Structure

- HSG launches the first generation of four-chucks heavy-duty tube laser cutting machine in 2019, laying a groundwork for cutting heavy, large and long tube stably.
- Heavy-duty pneumatic chucks for stable clamping .
- Maximum clamping diameter: 500mm (Round Tube).
- Single tube bearing: 1200Kg.



### 4+1 Full-track Portable Chuck Structure

- Weight Capacity: 4000KG
- Clamping Range



(Model:TL660)

### Cut with Short Tailings

- Four chucks combine ordinate cutting with various clamping types to achieve short tailing and improve material utilization ratio.
- Notes: When work procedures are well arranged, zero tailing comes true.



### Power-off Cutting Restart TechnologyDatabase

- Foreign-imported servo motor contains an absolute encoder to offer power-off cutting restart function, namely, users only need to click to restart the cutting and power failure will not be worried.



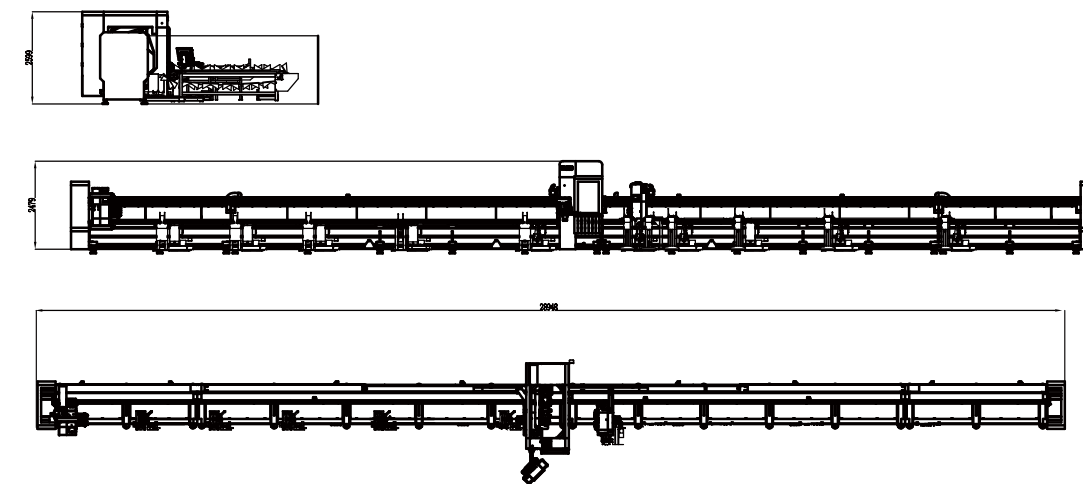
### Various Tube Processing Functions

- Space leapfrog and fly cutting, in favor of the decrease of idle running of cutting head and the increase of cutting efficiency Restart to cut from break-point, with less material waste
- Four-side centering for high cutting precision
- Smart typesetting algorithm to enhance material utilization



### Machine Foundation

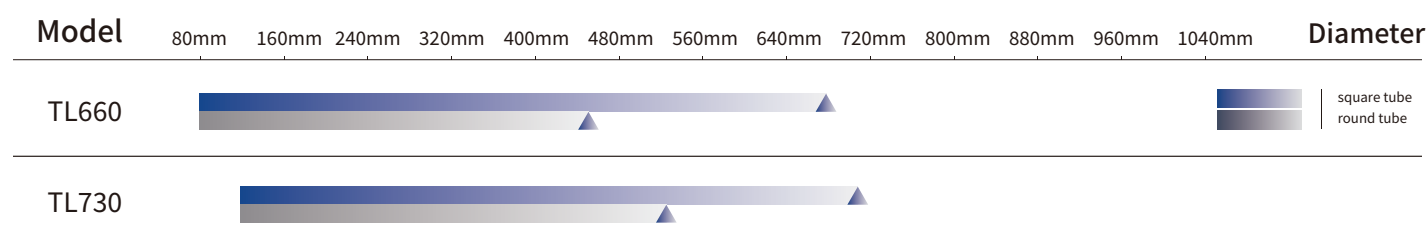
\*The marked size has about 10mm error  
 \*Pictures of TL660 are for reference only and subject to actual dimensions.



### Cutting Samples



### Cutting Capacity



The actual machines shall prevail and above data & pictures are only for reference.